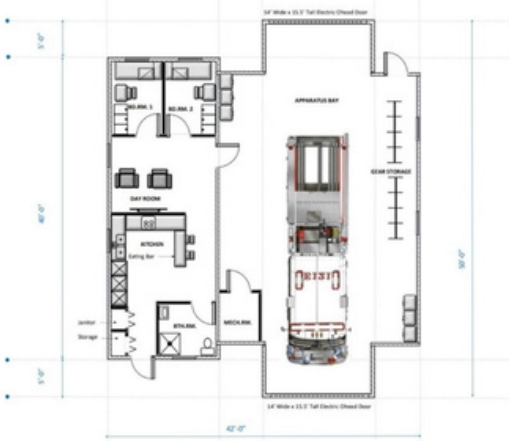




NEW OLOWALU FIRE STATION FUNDRAISER

Rendering of the new Olowalu modular station



PRO'S

- ✓ Save Lives!
- ✓ Helps keep main Maui hospital accessible
- ✓ Helps keep west Maui traffic flowing
- ✓ Reduces insurance costs as much as 50%
- ✓ Keep our homes and family safe!

CON'S

- ✓ NONE!

E KOMO MAI! JOIN THE WEST MAUI IMPROVEMENT FOUNDATION (WMIF) IN CONTINUING TO MAKE MAUI SAFER!

There is a spiritual axiom that people won't care much about what we know until they see how much we care. I am so grateful to our volunteer WMIF & WMTA Board of Directors and our supporters & members who are joining with us as we continue to reveal how much we care about our West Maui Community. No other organization in Hawaii has done more for its community in the last 43 years than WMTA. Our track record is stellar, and our future is ambitious

South Lahaina, Launiupoko, Olowalu, Ukumehame are all areas outside of the Maui Fire Departments (MFD) five-mile radius of the Lahaina Fire Station and therefore are at greater risk of fire and life Safety due to the MFD response time. Delayed response times may cost us our homes, businesses and even our lives! In addition, when brush fires start along the Pali all of West Maui is landlocked! Quicker response times benefit everyone!

A proposed station in Olowalu solves this problem for all. The County's long-term plans acknowledge a station is needed but may not be in the plans for many years. Through the hard work and cooperation from the Maui Fire Department, Maui Taxpayers Association (WMTA), Mahanalua Nui HOA Fire committee, Olowalu Homes, Inc., The County of Maui, and numerous other Individuals and Associations we are proud to announce that progress is being made to make this a reality sooner than anyone ever thought. Through a generous land donation of 2 acres in Olowalu, a new cost saving modular constructed Fire Station, we are streaking toward our goal which is to have a Fire station in Olowalu in less than 12 months!!

The next step in making this a reality, is to finish off the remaining financial requirements needed to make this happen. We anticipate final costs of an estimated 2 million dollars. In addition to your generous donations, we are working with the Mayor, the County of Maui, Federal and State Grants and other private corporation donations.

[Click Here For Fundraising Updates](#)

<https://linktr.ee/wmif>

DONATE ONLINE

Scan Here



- or -

[CLICK HERE](#)

DONATE BY MAIL

YES, I WANT TO HELP BRING THE OLOWALU FIRE STATION TO REALITY!

Donations are 100% tax deductible and will go towards getting this built for the community

WMIF is a 501 (c)(3) Charitable Organization - EIN #99-0275775

Donor Name: _____ **Email:** _____

Mailing Address: _____ **Phone Number:** _____

City, State, Zip Code: _____ **Check Number/Amount:** _____

Make Checks Payable to WMIF, (write Fire Station in the Memo) and send to:
WMIF- P.O. Box 10338 - Lahaina, HI 96761 <https://linktr.ee/wmif>